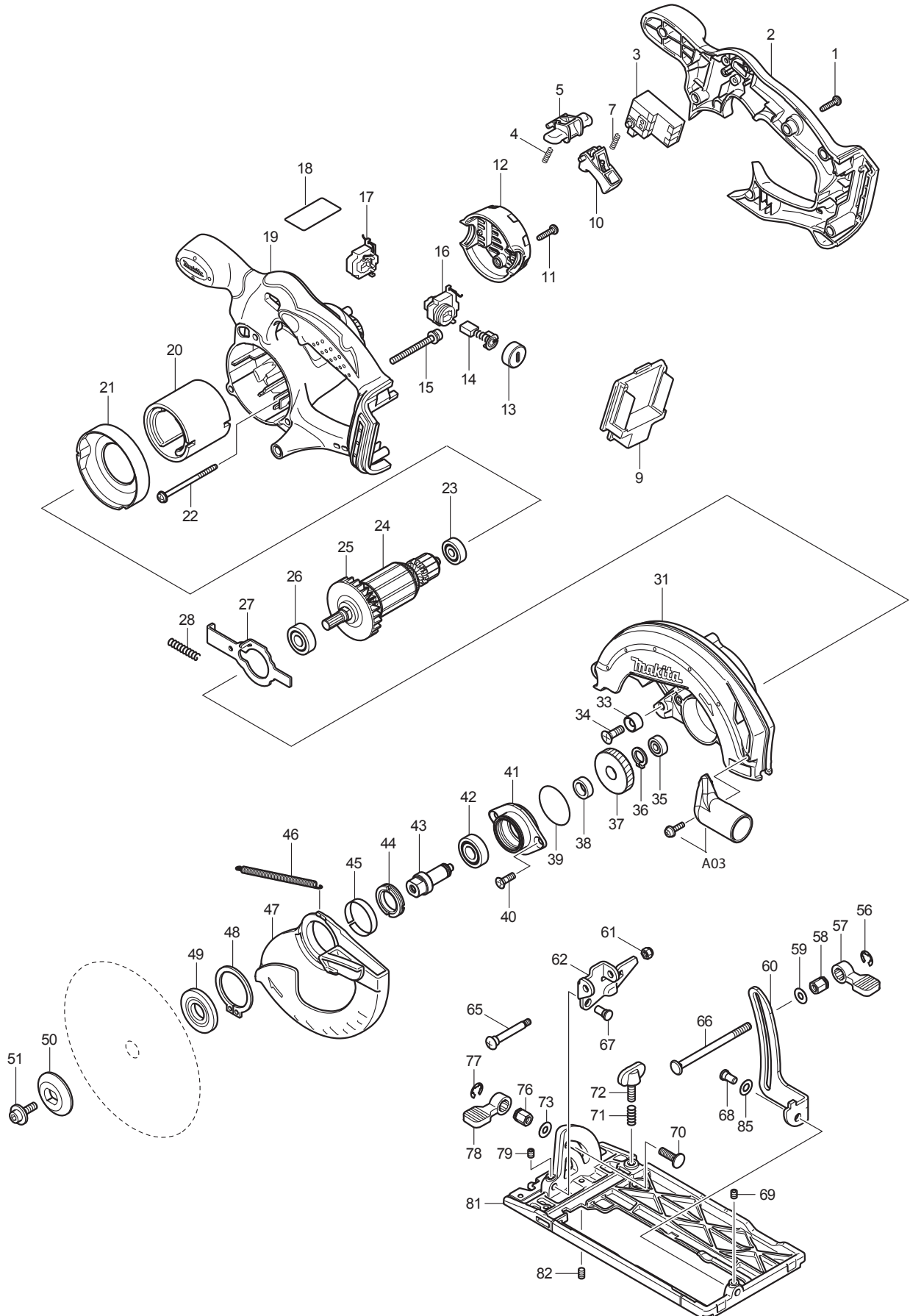




11 - 2013  
DSS611RFE / DSS611F / DSS611Z  
18V 6-1/2" CIRCULAR SAW



## PARTS LIST

Item No	Type	Part No	Description	Qty	Unit
001	2	266326-2	TAPPING SCREW 4X18	5	PC.
002		141472-1	HANDLE COVER COMPLETE	1	PC.
003		651976-0	SWITCH TG73BD	1	PC.
004		231469-9	COMPRESSION SPRING 4	1	PC.
005		419664-3	LOCK OFF LEVER	1	PC.
007		231469-9	COMPRESSION SPRING 4	1	PC.
009		644808-8	TERMINAL	1	PC.
010		419665-1	SWITCH LEVER	1	PC.
011	2	266326-2	TAPPING SCREW 4X18	2	PC.
012		419281-9	REAR COVER	1	PC.
013		643829-7	BRUSH HOLDER CAP	2	PC.
014		195022-4	CARBON BRUSH CB-441(2PCS/SET)	1	SET
015		911263-2	PAN HEAD SCREW M5X40	3	PC.
016		643897-0	BRUSH HOLDER	1	PC.
017		643898-8	BRUSH HOLDER	1	PC.
018		815L51-0	NAME PLATE F/DSS611	1	PC.
019		142597-4	MOTOR HOUSING COMPLETE	1	PC.
019	INC.	803K44-3	CAUTION LABEL	1	PC.
020	3	638571-3	YOKE UNIT	1	PC.
021		419285-1	BAFFLE PLATE	1	PC.
022		266292-3	TAPPING SCREW 4X65	2	PC.
023		210045-2	BALL BEARING 627DDW	1	PC.
024		510095-0	ARMATURE ASS'Y 18V	1	PC.
024	INC.		Item No. 23,25,26		
025		241869-5	FAN 55	1	PC.
026	2	210192-9	BALL BEARING 6000LLB	1	PC.
027		346059-6	SHAFT LOCK 104MM	1	PC.
028		233092-6	COMPRESSION SPRING 5	1	PC.
031		142596-6	BLADE CASE COMPLETE	1	PC.
031	INC.	213434-0	O RING 26	1	PC.
031	INC.	802U29-6	CAUTION LABEL	1	PC.
033		262049-0	RUBBER RING 6	1	PC.
034	1	251368-9	+ COUNTERSUNK SCREW M6	1	PC.
035		210028-2	BALL BEARING 606ZZ	1	PC.
036		961052-5	RETAINING RING S-12	1	PC.
037		227156-6	SPUR GEAR 52	1	PC.
038		257173-2	RING 12	1	PC.
039		213512-6	O RING 39	1	PC.
040		265034-2	+ COUNTERSUNK HEAD SCREW M5X16	2	PC.
041		318009-1	BEARING BOX	1	PC.
042	2	210163-6	BALL BEARING 6001DDW	1	PC.
043	2	327A37-1	SPINDLE	1	PC.
044		285845-9	BEARING RETAINER 19-29	1	PC.
045		345469-4	THICKNESS RING	1	PC.
046		231821-1	TENSION SPRING 3	1	PC.
047		419280-1	SAFETY COVER	1	PC.

Item No	Type	Part No	Description	Qty	Unit
048		961152-1	RETAINING RING (EXT) S-34	1	PC.
049		224411-7	INNER FLANGE 35	1	PC.
050		224409-4	OUTER FLANGE 35	1	PC.
051		266133-3	HEX. SOCKET HEAD BOLT M6X20	1	PC.
056		961014-3	STOP RING E-8	1	PC.
057		272229-0	LEVER 40	1	PC.
058		252158-3	HEX.NUT M6	1	PC.
059		941151-9	FLAT WASHER 6	1	PC.
060		345658-1	DEPTH GUIDE	1	PC.
061		252103-8	HEX. LOCK NUT M5-8	1	PC.
062		345657-3	ANGULAR GUIDE	1	PC.
065		265056-2	+ PAN HEAD SCREW M5	1	PC.
066		266194-3	FLAT HEAD SCREW M6X90	1	PC.
067		256480-0	SHOULDER PIN 6-7	1	PC.
068		256480-0	SHOULDER PIN 6-7	1	PC.
069		266264-8	H.S.SET SCREW(FLAT POINT)M5X6	1	PC.
070		251919-8	CAP SQUARE NECK BOLT M6X20	1	PC.
071		231007-7	COMPRESSION SPRING 6	1	PC.
072		251896-4	SCREW M5X20	1	PC.
073		941151-9	FLAT WASHER 6	1	PC.
076		252133-9	HEX. NUT M6	1	PC.
077		961014-3	STOP RING E-8	1	PC.
078		272251-7	LEVER 30	1	PC.
079		266264-8	H.S.SET SCREW(FLAT POINT)M5X6	1	PC.
081		154831-0	BASE COMPLETE	1	PC.
081	INC.	816850-1	SCALE PLATE	1	PC.
082		266229-0	H.S.SET SCREW(CUP POINT)M5X8	1	PC.
085		253186-1	FLAT WASHER 7	1	PC.
A01		164095-8	GUIDE RULE	1	PC.
A02		783203-8	HEX. WRENCH 5	1	PC.
A03		P-80012	DUST NOZZLE	1	PC.
A04		T-01395	6-1/2" C.T.SAW BLADE 16T	1	PC.
A04		A-85092	6-1/2" C.T.SAW BLADE 24T	1	PC.
A04		T-01404	6-1/2" C.T.SAW BLADE 24T	1	PC.
A04		T-01410	6-1/2" C.T.SAW BLADE 40T	1	PC.
A04		T-01426	6-1/2" C.T.SAW BLADE 16T/24T 2PC/SET	1	SET
A04	3	D-51063	6-1/2" C.T.SAW BLADE 16T WOOD	1	PC.
A05		-----	BATTERY CHARGER		
A06		-----	18V LI-ION BATTERY		
A07	1	INC. 419360-3	HANDLE	1	PC.
A07	2	141353-9	PLASTIC CARRING CASE COMPLETE	1	PC.
A07	2	INC. 163455-1	LATCH	2	PC.
A07	2	INC. 419360-3	HANDLE	1	PC.
A07	Opt	821010-X	TOOL BAG	1	PC.
C01		877529-9	CARTON F/DSS611Z	1	PC.
D01		654208-4	RECEPTACLE	1	PC.
D02		654510-5	INSULATED CONNECTOR 5.5-SD	1	PC.
E01	1	620259-9	CONTROLLER	1	PC.

Item No	Type	Part No	Description	Qty	Unit
E01	2	620G72-7	CONTROLLER	1	PC.